

## 【 CiRA-j-1106 】 Morphology of iPSC colonies

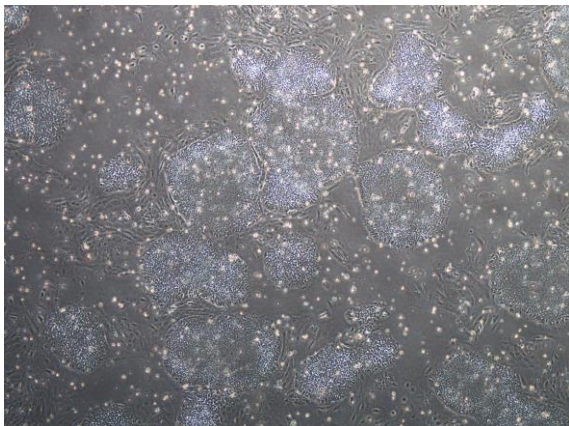
CiRA-j-1106-A: passage-2



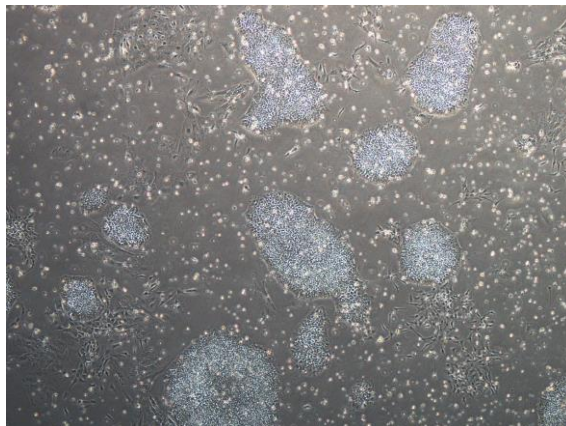
CiRA-j-1106-B: passage-2



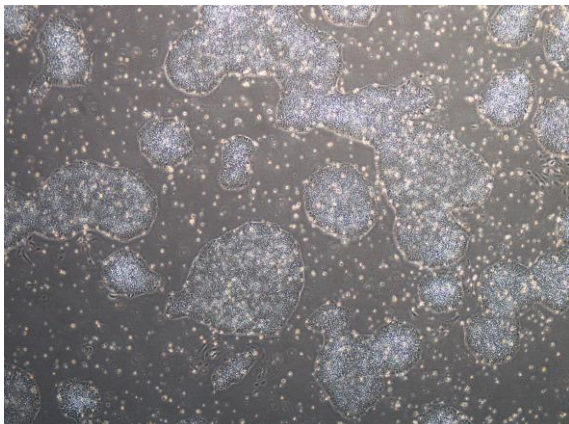
CiRA-j-1106-C: passage-2



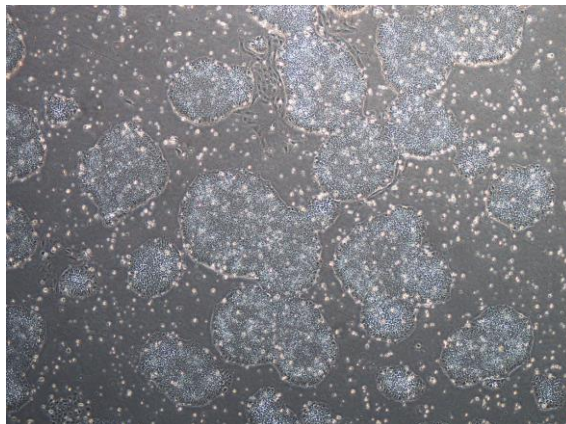
CiRA-j-1106-D: passage-2



CiRA-j-1106-E: passage-2



CiRA-j-1106-F: passage-2



( All images were captured at 4x magnification )